

Granite Paver Order Continued

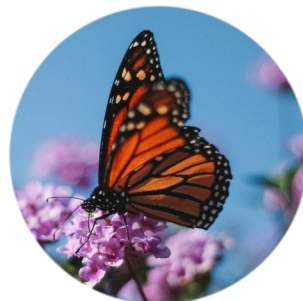
Please print the name/message that will appear on the paver in the boxes below. Messages can be placed on one or two lines and range from 12-54 characters based on the paver size.

Small Paver

Large Paver

And now these three remain: faith, hope, love. But the greatest of these is love.

1 Corinthians 13:13



SOUTH ELKHORN
CHRISTIAN CHURCH



*Dedicated
May 13, 2006*



We are Disciples of Christ, a movement for wholeness in a fragmented world.

4343 Harrodsburg Road.
Lexington, KY 40513
(859) 223-1433

admin@southelkhorncc.org

SOUTHELKHORNCC.ORG

About the Faith, Hope, & Love Garden

The Faith, Hope and Love Garden is a place of serenity and peace to reflect, pray and be renewed by the garden's beauty in the presence of the Holy Spirit.

The garden was built in memory of loved ones who have entered into God's eternal embrace and in honor of those people who continue to grace our lives.

A garden was a long time dream of South Elkhorn Christian Church, but the means to build it were not available. After the death of Missy Fields, her parents, David and Janie Fields, returned to the idea of a garden at South Elkhorn. Missy blessed many people through her short life; it is the Fields' hope that the garden will continue to bless people with faith, hope and love.

Perhaps you would like to remember a loved one or honor the living through a gift to the Faith, Hope & Love Garden. Gifts for the maintenance of the garden are greatly appreciated.

Make A Contribution

If you wish to make a monetary gift to the garden in memory or honor of a loved one, or contribute to the general garden fund, please send it to SECC office, pay online, or use Venmo with the description *FHL Garden Fund*.

If you wish to purchase a paver stone to be placed in the walkway of the garden in memory or honor of a loved one, please fill out the order form and return it to the church office.

Call or email the church office for more information.

859.223.1433

admin@southelkhorncc.org

GIVE ONLINE

Make a one time gift or set up recurring gifts.

Description: *FHL Garden Fund*



DONATE ON VENMO

@southelkhorncc

Description: *FHL Garden Fund*

Granite Paver Order

A gift of \$200-\$300 will purchase a granite stone paver in the walking path of the garden. Please print the name/message that will appear on the paver in the boxes on the other side. Messages can be placed on one or two lines and range from 12-54 characters based on the paver size. Please return the completed order form and payment to the church office.

GRANITE PAVER STONE

\$200.00 small stone

(12 character maximum per line)

\$300.00 large stone

(18 character maximum per line)

Name_____

Address_____

Email_____

Phone_____

(over)